

SOFTWARE INTRUCTIONS - REVOLVER

SOFTWARE INTERFACE



Button setting:

- Left button
- Right button
- Middle button
- Forward
- Back
- DPI ▶
- Three click
- RGB ON/OFF
- Multimedia ▶
- Fire key
- Key combination
- Macro
- DPI Lock ▶
- Number ▶
- Disable

DPI:

- DPI +
- DPI -
- DPI Loop

Multimedia:

- Media Player
- Play/Pause
- Next
- Previous
- Stop
- Mute
- Volume up
- Volume down
- Email
- Calculator
- My computer
- Home page

DPI Lock:

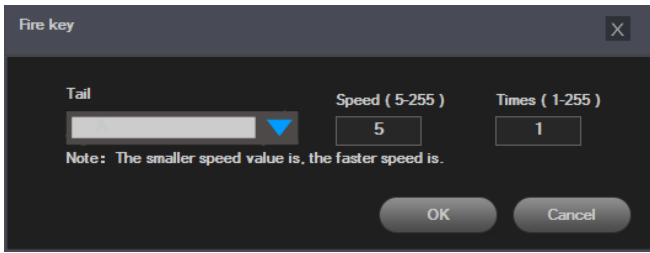
Select one of the DPI values to realize the on-the-fly DPI switching, in order to match mouse speed to gameplay demands instantly.

- 400
- 800
- 1000
- 1200
- 1400
- 1600
- 2000
- 2400
- 2800
- 3000

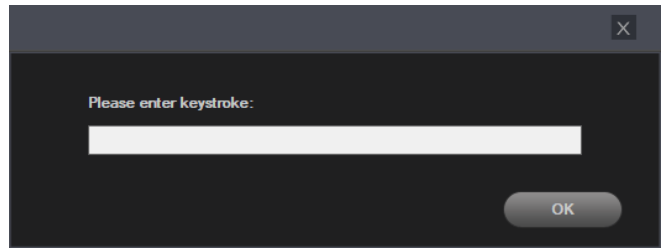
Number:

- 0
- 1
- 2
- 3
- 4
- 5
- 6
- 7
- 8
- 9

Fire key:

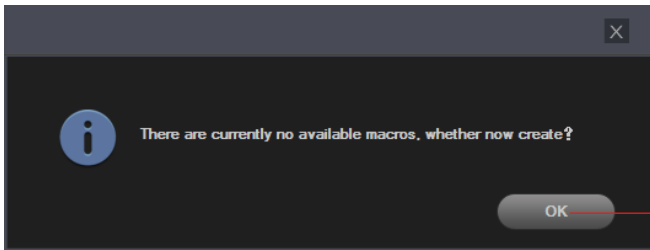


Key combination:

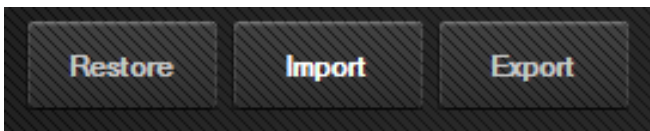
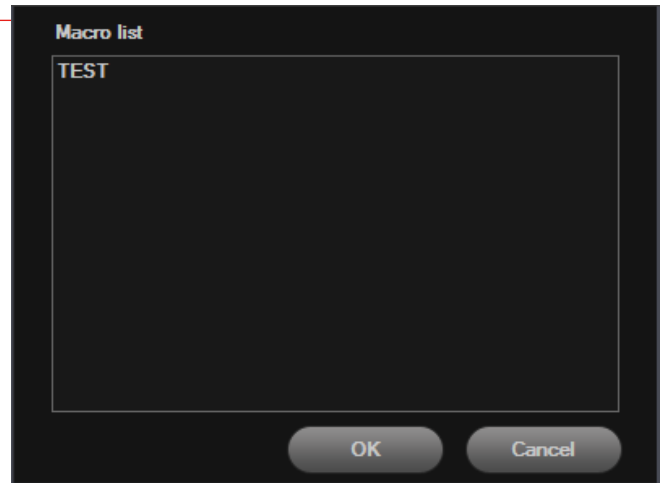


Macros:

When you haven't set any macro in the software Macro Editor, the tips will pop up, click "OK" and add a macro..

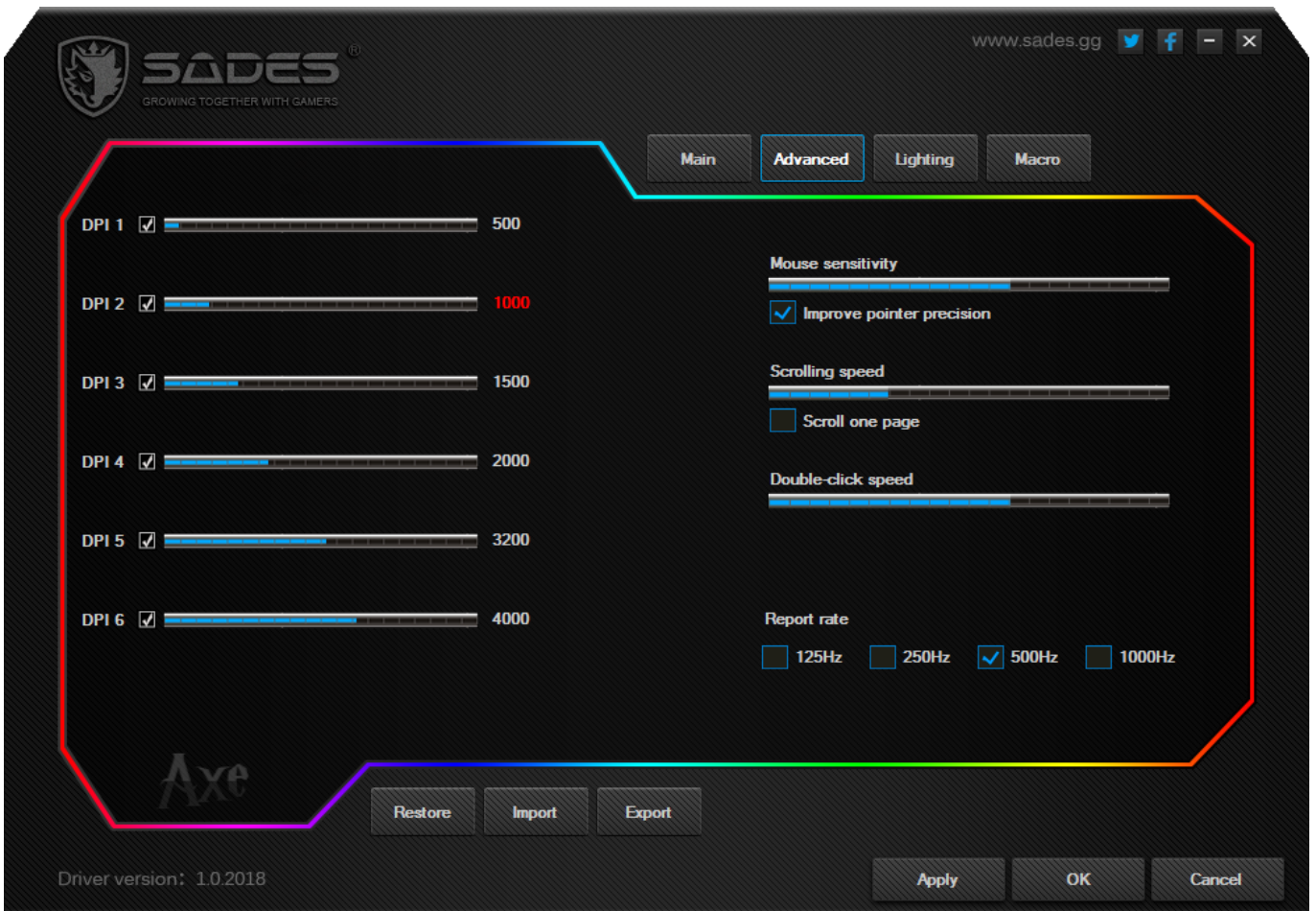


When the Macro Editor has the optional macros, select one of the macros from the macro list and click "OK."



Click " Restore " to restore all settings to default values.
Click "Import" to use the specific configuration you set before.
Click "Export " to save the current configuration as a profile.

Advanced setting:



DPI switch will have a desktop pop-up reminder when the drive is running.



DPI Indicator light:



DPI 1

DPI 2

DPI 3

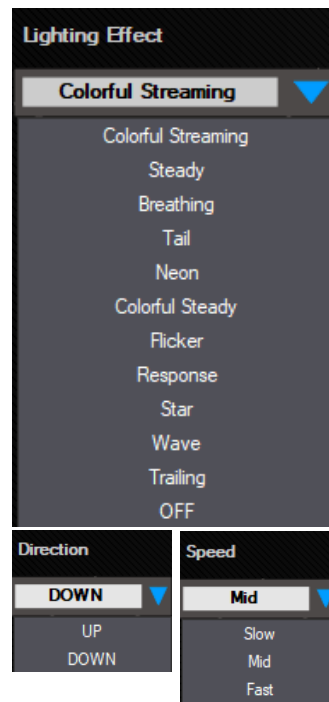
DPI 4

DPI 5

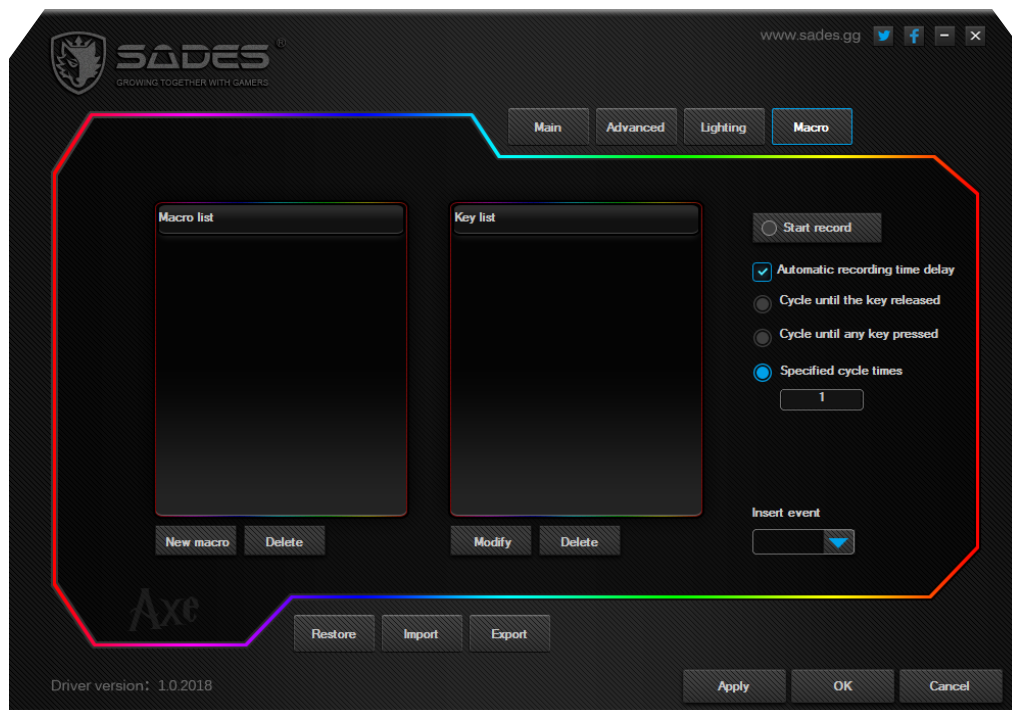
DPI 6

Lighting setting:

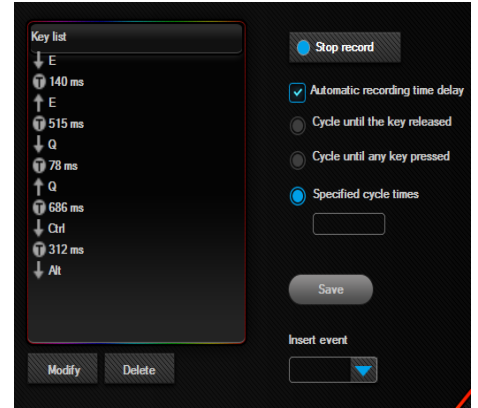
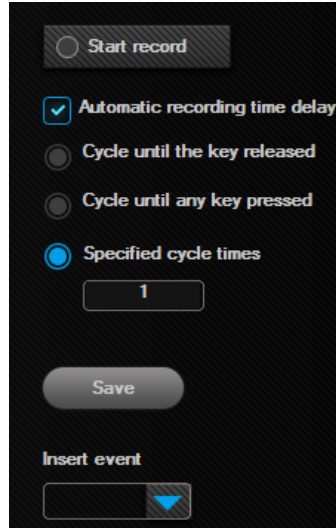
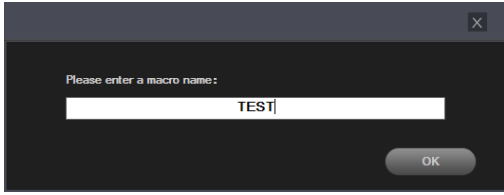
It includes Lighting Effect, Direction and Speed adjustment.



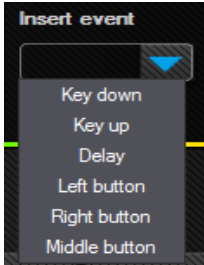
Macro:



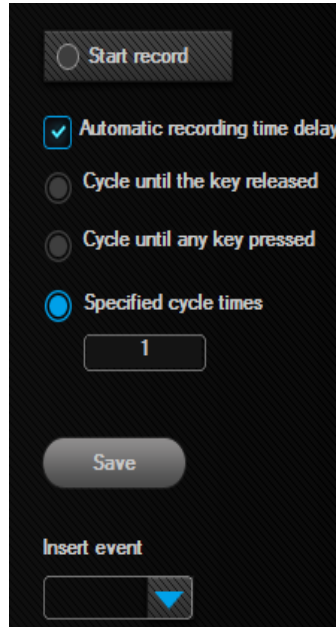
1. Click "New macro", The pop-up window will appear, please enter the macro name and click "OK" to create a macro.
2. Check "Automatic recording time delay", select a cycle mode for the macro and click "start record".
3. Press any key on keyboard you want to be recorded, click "Stop record " when you finish recording.



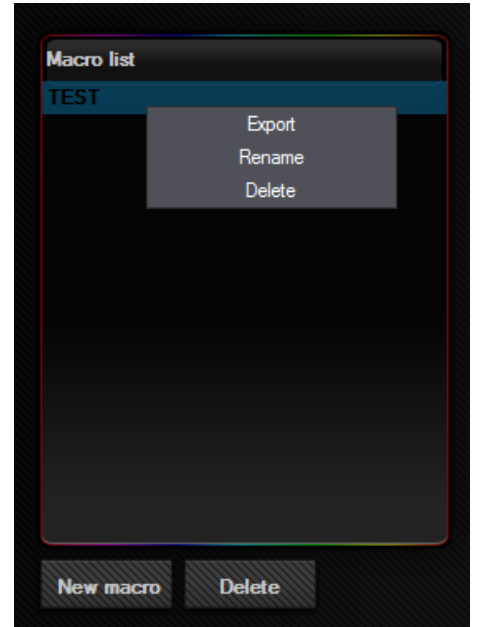
4. Select the any item in "Insert event", If you need to add any other actions in the macro



5. Select the item you want to change and click "Modify" or "Delete" to change the settings for the macro.



7. Right-click on the macro name to perform the operation.



8. Right-click on the blank area of the macro list to perform the operation.

